

Aims of the Queenstown & District Historical Society
2008 Incorporated

OFFICERS OF THE SOCIETY

President: Brian Bayley
Hunter Rd, RD1, Queenstown. Ph 442 1481 bayleybrpg@xtra.co.nz

Vice President: Bill Dolan

Secretary: Jocelyn Robertson
45 Cotter Ave, Arrowtown. Ph 442 1468 jsrob@xtra.co.nz

Treasurer: Barbara Hamilton
36 Cardigan St, Arrowtown. Ph 409 8025
barbhamilton@xtra.co.nz

Immediate Past President: Malcolm Boote
13 Shaw St, Arrowtown. Ph 442 0004 mandpboote@netix.co.nz



Brian Bayley

COMMITTEE

Ralph Hanan
144 Lake Hayes, Arrow Junction Highway. Ph 409 8959 rhanan@parpower

Danny Knudson
7 Edinburgh Dr, Queenstown. Ph 442 4228 knudson@hug.co.nz

Bill McDonald
6 Lake Ave, Frankton, Queenstown. Ph 441 4755 elaine.mcdonald@xtra.co.nz

Ray Clarkson
36 Lake Ave, Frankton, Queenstown. Ph 442 3681 theclarksons@xtra.co.nz

Geoff Bradley
Panorama Tee, Ph 442 8491, Queenstown. Ph 442 8491 geoff.bradley@xtra.co.nz

ANNUAL SUBSCRIPTION

Individual or Family Membership: \$10 a year
Corporate Membership: \$50 a year
Life Membership: \$100

The Queenstown Courier is posted out to members. Correspondence and accounts to: PO Box 132, Queenstown

The Queenstown Courier is produced with the assistance of the Lakes District Museum

The Queenstown Courier

Summer 2008

Issue No. 80



Above, December 2008 and summer upon us: a snow capped Coronet Peak and a Shotover Jet taken from the restored old Lower Shotover Bridge. In one shot, 3 iconic symbols of life in the Wakatipu—the river, the mountain and the jet boat.

The Old Lower Shotover bridge was opened in 1915 and replaced in 1975 by the current bridge on SH 6 down-stream. The old bridge in the photo was restored at a cost of \$750,000 by Rotary and re-opened for pedestrians and cyclists in 2005. This has provided a tranquil and scenic spot of historic interest for tourists and locals, a link in the Queenstown-Arrowtown Walkway and, at last, a safe passage over the river for cyclists and walkers, something that the new bridge certainly never allowed.

THE OFFICIAL PUBLICATION OF THE QUEENSTOWN & DISTRICT HISTORICAL SOCIETY INC

CONTENTS

- Page 3 President's Annual Report
- Page 5 2009 Calendar On Sale
- Page 6 Snippets
- Page 8 The Arthur's Point Gold Mining Company - Alan De La Mare
- Page 10 Paradise Re-Gained? - Bill Dolan
- Page 12 Lighting Up Queenstown - Alan De La Mare
- Page 14 Museum News
- Page 16 Rum Currie's Hut
- Page 19 Cottage Progress
- Page 20 *Cribbies in the Wakatipu*
- Page 21 *The Heart of the Queenstown Lakes District* by Irene Adamson
Reviewed by Elizabeth Clarkson
- Page 22 Obituary-Alan De La Mare

EDITOR

Michael Anderson
8 Delta St., Dunedin
Ph 03 4740791 (Dunedin); 4098115 (196 Speargrass Flat Rd)
m.j.anderson@xtra.co.nz

If you have comments on an article, memories to share, my opinion, an interesting photo please forward to the editor.

Thank you to all those who contributed articles and photographs for this issue.

PRESIDENT'S ANNUAL REPORT

Queenstown and District Historical Society Incorporated
President's Annual Report for the Society's Final Year, Ended 30/9/08

It is with some emotion that I present the final President's report of our 45 year old Society, which resolved to wind up on September 30th, 2008.

I want to thank all of those who have encouraged and supported the members of the committee and me to proceed with this dramatic undertaking. It is obvious that many recognise that to have an effective Society it is necessary to take this step of forming a replacement Society vested with adequate powers to be a force in the community in future years. It is exciting, and a little daunting, to realise that the increase of powers will enable the new Society to fully participate in future planning issues. This will require considerable input from the Society.

I have already recorded my thanks to the members who, over the whole 45 years of existence, have undertaken so much work promoting the Society's objects and aspirations to protect heritage. We all owe them respect and gratitude for their work, dedication and vision.

In recent years, the NZ Historic Places Trust has encountered difficulties maintaining a Queenstown sub-branch.

Object 2.1 [c] of the new constitution provides the Society may:

"Support the NZ Historic Places Trust in all aspects of its responsibilities, duties and initiatives in the Wakatipu basin." In the past, our old Society has run independently but frequently in sympathy with NZHPT. By statute, many matters are required to be referred to NZHPT. The Society is frequently unaware of some of these local issues. Consideration to establish closer working relationships with NZHPT's Dunedin branch to enhance the opportunities to protect heritage issues more effectively in the future are underway. The sharing of knowledge between the two organisations should be of real benefit in the protection of heritage in the Wakatipu basin.

Queenstown Lakes District Council has embarked on the preparation of a Heritage Strategy. I am one of a small team working on this project so your Society is represented.

An exciting new local initiative is the educational DVD on the history of the Glenorchy scheelite mining industry. The idea was conceived by Pat Paulin who is one our members and a special guest tonight. The Glenorchy Community Association's Battery Association sub-committee took up the challenge of the project. Your Society encouraged the project unreservedly and donated \$1000 seed funding. The Society wishes to record its pleasure and congratulations to all concerned for achieving the completion of the project.

It is hoped that this may be the first of a number of historically accurate DVD's on many of the special features of the district: for example Skippers road, mining at Macetown and changes of land use in the Gibbston area.

The Society is strongly supportive of the provision of information signage throughout the Wakatipu. This can take several forms. Many of you will have seen the small oval brass plaques on many of the sites covered by the Society's Queenstown walking guide. The Society has encouraged others such as the newly arranged information panels around the recently completed Lake Hayes Trail. The Society has pledged a contribution towards signs on the planned river trail at Gibbston. The committee members wish to encourage the better understanding of many more local points of interest and history, and plans to continue this support.

Over the past year, the Society members have again been able to enjoy a number of field trips and outings which have been enthusiastically supported. The walk around some of the Arrowtown cottages was of wide interest. I remind members that the last Courier has interesting photographs and notes on each cottage. The trip to Riverton was most enjoyable and participants agreed that the long bus ride was not too arduous. Members found the Gibbston visit was full of interest and surprises. On behalf of us all, I thank Barbara Hamilton, Ray Clarkson and Shona Blair for organising these enjoyable and memorable events.

We are all indebted to our new Courier editor, Michael Anderson. With assistance from Ray Clarkson, and the improved print quality, we have all enjoyed the recent Couriers. Thank you.

Jocelyn Robertson has been of great help to me as a thoughtful and gracious secretary. She and Barbara Hamilton have again ably represented the Society on the Lakes District Museum Trust Board. Thank you.

The committee has been a tremendous support to me and I wish to record my thanks to each of them for their willing in-put. It is a privilege to chair such an enthusiastic and supportive committee and membership. I thank them all for this.

Lastly, I want to thank our members whose support and encouragement will ensure the success of the new Society.

Brian R. Bayley

November 2008

FOOT NOTE

The new Historical Society, formed November 6 2008, was incorporated by the Registrar of Incorporated Societies on November 21, 2008.

2009 CALENDAR ON SALE

Get in quick-these are selling fast. This is the official calendar of the Historical Society and depicts twelve pre-1920's post cards of Central Otago.



The front cover, above, is of Queenstown and many will no doubt have fun (and arguments) relating their own personal history and memories to the image.

Other months feature Lawrence, Alexandra, the Kawarau Gorge, Naseby, Arrowtown, Cromwell, Frankton and Wanaka.

The calendars are available from several outlets in Queenstown, Arrowtown and Frankton or from Committee members. At just \$10 (including an envelope for easy posting) they are very reasonable and make great gifts.

Well done to Ray Clarkson who organised the calendar.

SNIPPETS

Ray Clarkson

SOCIETY EXCURSIONS COMING UP

SUNDAY FEBRUARY 15, 2009

Put this in your diaries! We are taking a trip to Alexandra where we will be looking through the museum and checking out points of interest in the area, particularly to do with the dredging history of the area. Bring your own lunch, refreshments and chairs.

SATURDAY MARCH 21, 2009

Our major excursion for the year. Don't miss this. This is a full day trip to historic Lawrence where we will be focussing on the wonderful buildings in the town. We will be visiting some very interesting places.

FIELD WORK

Stewart Hardie reports that the Department of Conservation in its heritage capacity is working on the very popular Chinese settlement in Arrowtown. The rock shelter next to Kong Kai's hut which was burned out two years ago is being re-built, while workmen are also attending to the maintenance at Old Tom's Hut.

In Macetown, they are building a fence around graves in the cemetery and finishing repairs to Needham's cottage and bakery.

At Wyuna, the Jenn Hut, with its important relationship with scheelite mining, will have a recycled T and G floor, as well as a new door and windows. The Woller's Hut will receive major attention to protect it from a sliding bank.

DONALD HAY YACHT RACE

2009 will mark the 30th anniversary of the race which will revert next year to the original course of Kingston to Queenstown, which was Donald Hay's voyage of 1858, when he was searching for good farming land. The naming of the race after him was a great recognition of one of the very early hardy explorers of the Wakatipu.

IN THE PIPELINE

Bill McDonald, whose family associations with this area go back several generations, is compiling an account of farming in the Wakatipu. He has a great first-hand knowledge and this, coupled with the detailed research that he is doing, should produce a very valuable local resource.

Scheelite DVD

SCHEELITE

Just released is the DVD on scheelite mining being promoted by the Glenorchy Battery Association. It was an excellent idea of Pat Paulin's who fronted it. Pat is a member of the Society with close ties to the industry. The DVD has been made commercially in Invercargill. After an initial premiere in Glenorchy, the Historical Society had a private screening at the AGM in early November. It has a comprehensive view of scheelite mining with local people contributing to the commentary. The hardships and problems of working at high altitudes in difficult terrain and harsh

P. Sharpe, mining, Mt
Judah, Glenorchy



weather are well explained. The magnificent photography of the area shows these conditions—the tracks, mullock heaps, huts and equipment. The Society was pleased to be associated with such a worth-while venture. Copies can be purchased from the Association or the museum.

PLAQUES

The Society is busy continuing the placing of plaques on recognised buildings in Queenstown. These are attractive, very well made metal ovals with a little inscribed information and number which corresponds with the published guide book available in shops. Recent additions to the list are the Bowling Club Pavilion which celebrated 100 years recently, and the Thompson House in Hallenstein St, owned by Jim and Jan Syme. The full list is up to 30 now. George Ellingham is the "skilled attacher".

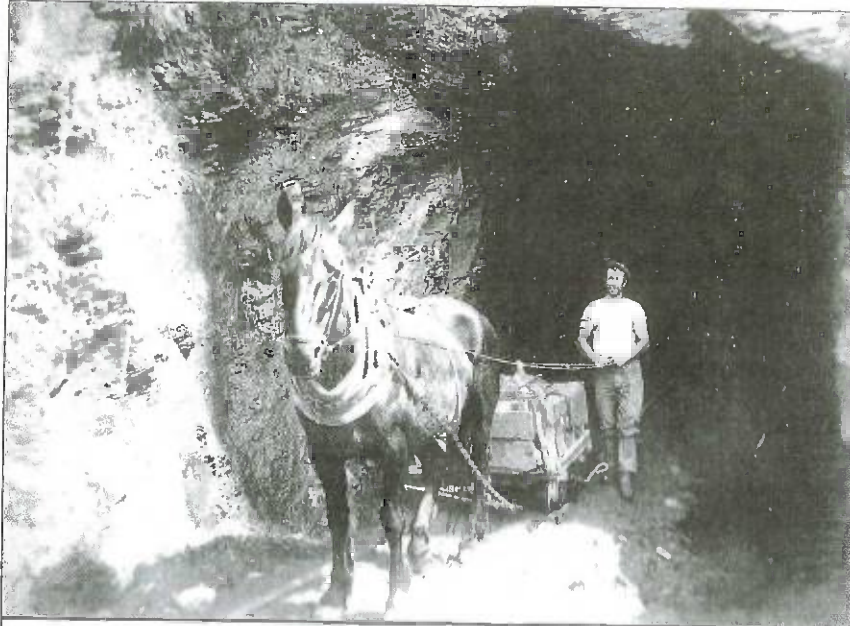
TRAILS TRUST TrailsTrust

We have offered assistance to the Trails Trust which is now planning on constructing a walk from the Nevis Bluff end of the Gibbston Valley to the Bungy bridge. Preliminary exploration has revealed many previously unidentified mining remains—huts, walls, dams, fruit trees. It will be an interesting and exciting walk above the river and through the wineries.

**THE ARTHUR'S POINT
GOLD MINING COMPANY LTD**

Alan De La Mare

The story of the Oxenbridge tunnel at Arthur's Point, in a quest for gold, is well-known and the evidence of the endeavours of the syndicate is a familiar sight near the Edith Cavell bridge.



The mouth of the tunnel, near its completion in earlier days.

What is not so well known is that, no sooner had the Oxenbridge syndicate abandoned their claim, a company was formed, named the Arthur's Point Gold Mining Company, to take over the claim.

The company was registered in October 1909 with a capital of £5000. Of these, 2000 shares each of £1 were treated as fully paid and presumably these were issued to the Oxenbridge syndicate as payment for the claim. Another 2000 were issued as paid up 10/- and the remaining 2000 were termed contributory shares liable to full payment.

The scheme envisaged deepening the tunnel for its full length by 5 feet which would lower the water level in the area it was intended to mine. A vertical shaft was to be cut at the top of the claim and a tunnel cut back to the area which it was considered was gold bearing.

The proposal to deepen the tunnel was approved by the Mines Department and they offered to meet 25% of the cost.

The company was Invercargill based and all the directors came from the city and included one G. Oxenbridge, who was described as a brick maker of Tisbury. The Chairman was an Invercargill doctor, J. A. Fullerton, but he was killed in a motor accident on the eve of their first meeting.

The tunnel was duly deepened as planned and the Government paid their agreed share of the cost. The vertical shaft at the upper end of the claim was excavated and a drive was made 50 feet towards the area considered to be gold bearing. This was unsuccessful, as there was too much water encountered to cope with. In June 1911, it was decided to extend the drive as soon as water levels permitted. Once again, water defeated the shaft and drive and it was then decided to work the claim by an open paddock. An engine was hired and a Tangye pump purchased to work the paddock by hand.

Hand working proved too costly and the offer of the hire of elevating plant and water races for a three month period was accepted. A large paddock was taken out to a depth of 20 feet, but still no gold.

At the end of the three month period, J. McMillan and Sons, who hired the plant, raised their charges for a further period, making it uneconomic to continue. The McMillans of Arthurs Point had been engaged in mining at Big Reach for some years and were associated with many mining ventures in the area.

At this time, a cut was made into the middle of the river resulting in a return of 94oz of gold. It was the only piece of good news in a long list of disappointments.

The company now decided to bring water from their claim at Staircase Creek on the east side of the river, but an issue of shares to fund this work failed to be taken up. The lack of funds made it impossible to continue and the company was wound up.

The company was typical of others on the river, proving optimism, hard work and perseverance were of little use if the river refused to give up its gold.

PARADISE RE-GAINED?

Bill Dolan

As a result of substantial grants from the Central Lakes Trust, the Community Trust of Otago and the Lotteries Grants Board, Paradise House is about to receive its most comprehensive make-over in 100 years. This will be a major repair and refurbishment project and, because of the building's Category One classification with the Historic Places Trust, will be carried out under the oversight of the Historic Places Trust.



The objective of the restoration project is two-fold: to preserve the building and its associated period features, as well as return the building to its original function as a unique accommodation facility. The project will be managed by Jack Gillies, the Queenstown District's pre-eminent conservation architect.

Paradise property comprises 129 hectares situated some 20kms beyond Glenorchy, in the Dart River Valley. First known as Eden Grove, it was designed and built in 1883 by William Mason, New Zealand's first Government architect and, later, Dunedin's first mayor. William Mason intended to use the property as a retreat, small farm and accommodation facility but, after several years, mainly because of his deteriorating health, the property was sold to the Aitken family who operated it as a guest house for the next fifty years. It was the property's role in the development of Head of the Lake tourism that made Paradise famous.

As far back as the 1890's, tourism was big business in and around Glenorchy and the Paradise Valley. Paradise, especially under the Aitkens, welcomed guests, provided a safe haven for exploration of the area and was inextricably linked with the surrounding wilderness. It competed vigorously with Arcadia guest-house next door and the various Glenorchy hotels.

The Aitkens ceased operating Paradise House around 1943. The Veints, the property's new owners, continued to run it as a guest-house until 1949 when it was bought by the Miller family, with whom it remained until David Miller's death in 1998. At that stage, ownership of the property passed to the Paradise Trust.

Paradise was also a prime source of timber for the growing needs of Queenstown. Traces of the selective logging and milling which took place until about World War I are still visible in the beech forest.

Paradise also played its part in the compelling history of the scheelite mining industry around Glenorchy. A small mine was established at the northern tip of the property about the time of World War I when the mineral's steel-hardening properties were required for armaments. Miners often boarded at Paradise House. The mine buildings have been removed but the remains of the blacksmith's shop can still be seen.

The Trustees' plan is to restore Paradise House to the point where it can be used as a resource centre, as well as a place to display Paradise related artefacts and David Miller's art collection. The machinery sheds would be used to house the collection of vintage tractors and other equipment. The old kitchen and wood stove would be restored to full functionality. The accommodation wing would be restored/converted to high-end back-packer style accommodation.



LIGHTING UP QUEENSTOWN

Alan De La Mare

The residents of Queenstown were familiar with the use of electricity for lighting and industrial use from very early times.

The installation of a hydro scheme to power the stamper battery at Bullendale in march 1886 was a first for New Zealand. A by-product of the scheme was the provision of lighting for some of the buildings in the village. Later in the same year, Mrs Julia Eichardt installed electricity and bells in Eichardt's Hotel. The electricity was generated by a pelton wheel driven from the town water supply. In May 1887, electricity was supplied for the opening of the Garrison Hall in Beach Street. This was a one off effort organised by Fred Evans, Manager of the Bullendale mine, and provided another example of the value of electricity.

Over the next few years, the value of electricity for lighting was debated from time to time, until, at the turn of the century, the Borough Council decided the time for debate was over and took steps to provide electricity in the town. The first step was to obtain legislative authority and this was supplied by the Queenstown Electricity Lighting Act of October 2nd, 1900. The Act provided for the Borough Council to contract with a person or company to construct and operate a scheme for lighting and power in the Borough for a period not exceeding 21 years. At the end of the term, the Borough was entitled to purchase the plant at valuation, which was not to include any good will.

The Borough appears to have jumped the gun for, in April 1899, they called tenders for lighting the town with electricity for a period of 15 years using water from Horn and Bushy creeks. The Borough held the water right for Horn Creek, having purchased it from the McGillivray Brothers in 1875 for £60.

In due course, a tender was accepted from one, James Tyrrell. Having achieved the preliminary steps, nothing further seems to have happened, because, in June 1901, James Tyrrell was released from the contract. We can only speculate on the reason for the U-turn, but, probably, it was found there was insufficient fall to generate electricity from these two small creeks. The only likely source was the One Mile Creek which was used for the Borough water supply.

All the kerosene lamps were given a reprieve until 1910, when the Borough installed an acetylene gas plant to light the town. The plant was situated about where Thomas's Hotel stands in Beach Street.

This scheme had its short comings and, in 1922, approval was given to using the water of the One Mile Creek to power a hydro electric plant, and the rate payers approved borrowing £7000 for the purpose.



How and when to transfer from gas to electricity and what to do with the gas plant was solved in an instant when the gas plant blew up on January 23rd, 1923. The picture above shows the effect of the huge explosion on the gas works itself. Damage was widespread, but, luckily, there were no injuries.

It was a case of finding the old kerosene lamps, dusting them off and putting them into use until the hydro scheme came into operation on September 18th, 1924, at a cost of £12000.



A waterfront house lies in ruins after the gas works explosion of 1923.

MUSEUM NEWS

Thinking of the perfect gift? The Lakes District Museum has an outstanding selection of books, cards, prints and souvenirs. Come in and view our books on local history, social history, natural history, children's books, picture books and food. We also have a large stock of 2009 calendars, including the Historical Society's one.

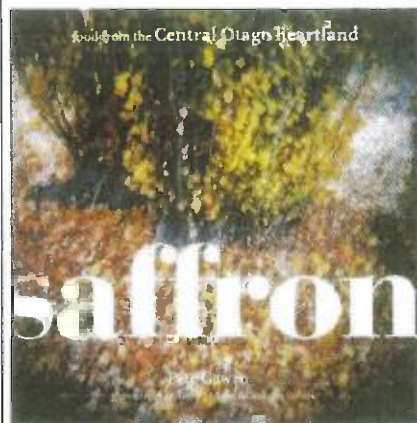
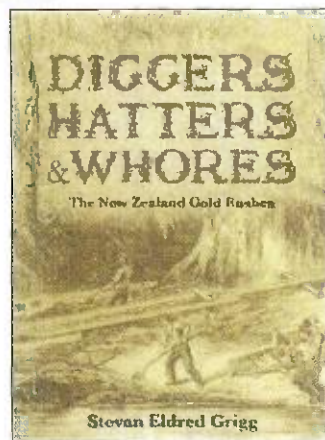
Remember: 10% discount for museum members.

NEW RELEASES AND HOT SELLERS

Diggers, Hatters and Whores

- *Stevan Eldred Grigg*

A history of New Zealand's gold rushes.



Saffron - *Peter Gawron*

A beautiful book inspired by the nationally recognised Arrowtown restaurant. Much more than a collection of recipes, with notes on local flora and fauna, history and stunning photographs.

Pioneers of Martin's Bay

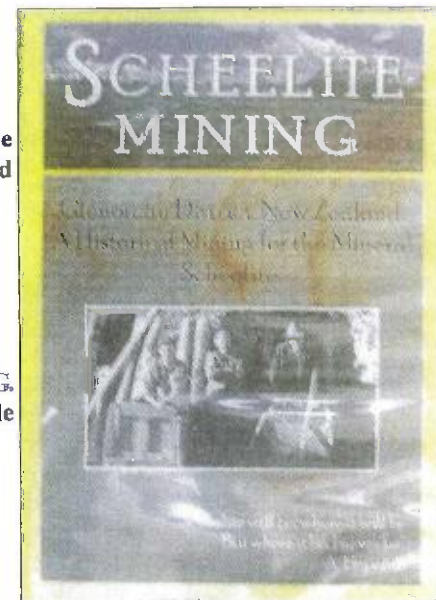
Our second print run of this publication has just arrived

Central Rocks - *Daphne Law and Jane Forsyth*

A guide to the geology and landscapes of Central Otago.

High Country Lark - *Neville Peat*

Another gem about the Head of Lake Wakatipu by this popular writer.



Scheelite Mining DVD - the Glenorchy Battery Association and Pat Paulin.

Below, from left, A. Paulin, G. Paulin and Vic Scheib at 12 Mile scheelite tunnel.



Phone: 4421824 email: museum@queenstown.co.nz

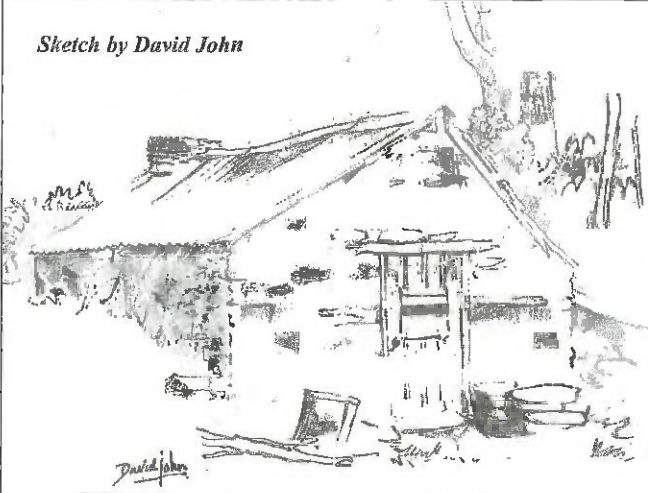
RUM CURRIE'S HUT

Gibbston Community Association Initiative

Many of you will be familiar with Rum Currie's Hut at the bottom of Rafter's Road.

It was built with stone taken from Hugh Harvey's nearby stables and those who visited the site last autumn may recall the lovely autumn colour of the many sycamore trees that invaded the site. Unfortunately, those trees are wreaking havoc

Sketch by David John



with the old orchard planted by Harvey in the mid 1980's.

The Association is very concerned about the future of the heritage orchard, so they organised for a group of volunteers to clear some of the competing vegetation around the fruit trees over winter. The rescued trees are looking better but there is still work to do.

Susan Stevens, Chairman of the Association said, "Our archaeologist told me about three other historic orchards that were all killed when they were eventually overcome with competing vegetation, which grows much faster than the old fruit trees. We want to make sure that doesn't happen to these. We'd also like to learn more about the site and what else may be hidden in the encroaching bush."

The Association is working with DOC and The NZ Historic Places Trust to co-ordinate archaeological mapping of the area, including the heritage trees.

After they finish clearing the competing vegetation around the remainder of the orchard, they're organising for a group of graduate students from the Otago Anthropological Society to spend a weekend at the site to do the measuring and mapping under the direction of Dunedin archaeologist, Peter Petchey.

QLDC staff and Arrowtown Horticultural Society volunteers will help propagate the old trees so that, when they do eventually die, the Association can replace the same tree in the same spot (as per the archaeological map).

Susan said, "We'd also like to sell some of the trees as a fund-raiser for our Association, which is dedicated to protecting, preserving and promoting our heritage sites."

The Association has asked for help. "We'll need to feed the students when they're here, so I was hoping we could get a group of volunteers to bring dishes for a pot luck—a 'ladies a plate', kiwi lunch and dinner," said Stevens.

This is an ambitious project for a small community, but what a worthwhile goal. Please ring Susan at 441 8819 or email her at: teryemesu@xtra.co.nz, if you'd like to help.

NOTE

Just before going to print we learned that the Queenstown Historical Society will donate and prepare two barbecue lunches, a local woman will donate and prepare a ham for one of the dinners and we've received an offer of accommodation.



BEFORE

At right, the overgrown area before clearing up began near Rum Currie's hut.

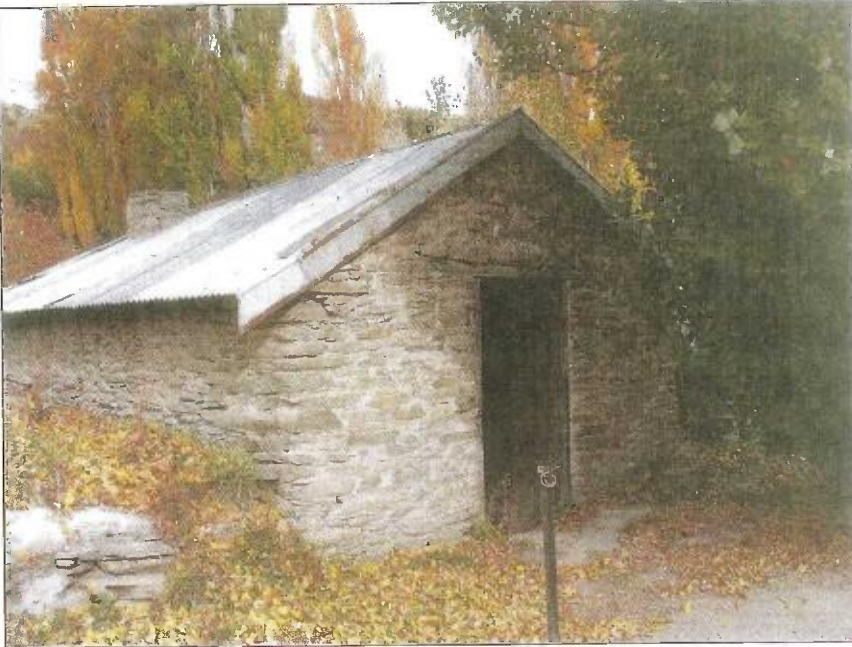
AFTER

The old stone walls are revealed. A frying pan also turned up once the scrub had been disposed of.

The photos are taken from the same spot.



RUM CURRIE'S - A LITTLE HISTORY



Harvey was one of the earliest settlers and mined with his neighbour, Peter Tomanovich at the Nevis Bluff. Both men had fine orchards but Harvey had added more variety of plums, six almond trees, a quince and a bitter almond. Harvey's wife was killed from a fall and her body found in the Kawarau some weeks later.

Harvey's house was of mud brick with an open fire for cooking. His explosives store (common amongst miners) can still be seen but only the stone chimney remains of his house.

After Harvey's death two rabbiters converted his stables into a cosy hut. Eventually, the hut was taken over by Jack Currie, a WWI veteran, who was one of many who came into the area in the 1930's depression, taking over the numerous unoccupied miners' huts and living rent-free. Because of his drinking, he was 'Rum' Currie to everyone. He did some gold-mining, helped with harvesting, kept the hut tidy and later survived on just his war pension and the Age Benefit.

'Rum' left Gibbston in the 1950's and spent his last days in a rest home in Riverton. Today, his hut is used by a local rafting company which ends its trips there

Adam's Cottage prior to restoration

COTTAGE PROGRESS



The Adams' Cottage, above, awaiting restoration, which will begin soon, and Romans' Cottage, below, awaiting repainting after restoration. Pictures taken on December 15, 2008



Roman's Cottage prior to restoration

Cribs in the Wakatipu

CRIBBIES IN THE WAKATIPU

'A crib is just a crib; it's not trying to be anything else. ... It's hand-me-downs, leftovers, history.'

'Our Piece of Paradise: Cribs in the Wakatipu, 1940's - 1980's' is the latest historical exhibition being undertaken by the Lakes District Museum and principally sponsored by Mactodd. Discover the architectural history of cribs (holiday houses for those north of the Waitaki River) and the cribbie culture that developed in these buildings. A vital element of the district's history, many New Zealanders were introduced to the Wakatipu through a family, or loaned, crib. Celebrate and reminisce about the innovative, DIY nature of kiwis who sought the hot sun, rivers, lakes, crisp clear winters and 'rural' nature of the Wakatipu. The Museum's art gallery has been transformed through the use of oral history interviews, photographs and cribbie 'kiwiana' artefacts. An engaging, interesting and informative exhibition, suitable for the entire family. Learn about these buildings before they disappear, this is one exhibition you will not want to miss!

Details

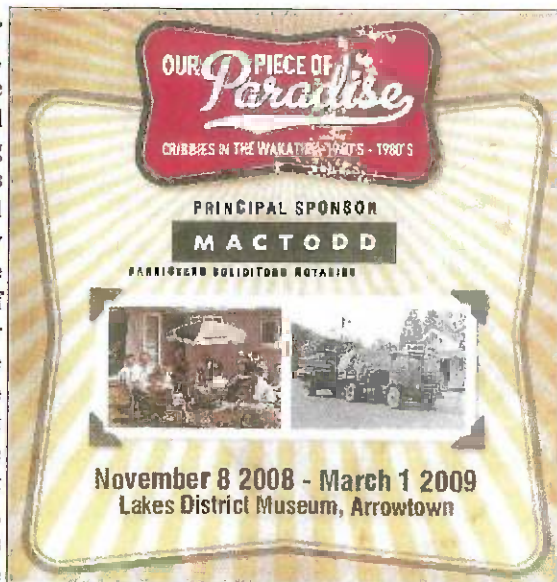
Sponsors: Principally sponsored by Mactodd.

Also supported by:

Andrew McLeod Construction, Real Journeys, Skycity Queenstown Community Trust, Skyline Enterprises, Creative Communities Queenstown, Queenstown and Lakes District Historical Society, Queenstown Times, Harcourts.

When: 8 November 2008 - 1 March 2009

Where: Lakes District Museum and Art Gallery.



The Heart of the Queenstown Lakes District - Irene Adamson

THE HEART OF THE QUEENSTOWN LAKES DISTRICT

Irene Adamson

Reviewed by Elizabeth Clarkson

For thirty five years Irene Adamson recorded the events of the Queenstown Lakes District as reporter for the Southland Times.



Irene Adamson and Tommy Thomson at the launch of her book recently.

Her reports are factual and her collection, *"The Heart of the Queenstown Lakes District"* is a valuable addition to the recording of history in the late twentieth century. Through this book we follow the governance of several mayors and councillors and the events of the time in a growing district. The record of the 1962 centennial celebration is colourfully illustrated, followed by the establishment of the Queenstown Mall, the building of the Lakes District Hospital and the Malaghan Library. The growth of communications, particularly the opening of the Glenorchy road in 1962 and the Dart River and the Shotover River Bridges in the 1970's, is testimony to the growing needs of the community and the demands of the tourism industry.

Obituary- Alan de La Mare

Miss Adamson covers the events and development of not only Queenstown and Arrowtown, but Glenorchy and Wanaka, painstakingly. Her account of the election to the Council of 'strong-minded women', Anita Ryan, Marygold Miller and Nancy Williams, with their insistence on the importance of heritage to the district, is an interesting feature of the book. Adding to the readability and attractiveness of this record are the many illustrations, both black and white and colour. The volume is a splendid, thorough and comprehensive account of a district expanding and growing in diversity. It is furthermore, a real tribute to the people who gave so much time to public service. It deserves to be read.

OBITUARY ALAN DE LA MARE

By Brian Bayley

Alan De La Mare died on December 11, 2008. Alan had enjoyed a long life and 58 years of marriage to Una. During his retirement in the Wakatipu, Alan took a keen interest in historical matters, especially Skippers. He was an energetic researcher and a prolific writer. He wrote on the early history of Queenstown. Recently, he was researching Choie Sew Hoy and the Nokomai goldfields.

Alan was a valued committee member of the Historical Society for a number of years. He contributed interesting articles for The Courier for more than 25 years. We remember with gratitude Alan's devotion recording some of his knowledge of, and interest in, matters of historic interest for the benefit of our members, as well as future generations.

The Society offers its sincere sympathy to Una and their family. We have all lost a true friend.